

EU-funded research project promoting educational equality in Europe

PIONEERED

9 European focus countries – interdisciplinary research teams

ABOUT PIONEERED

Educational inequalities persist in European education systems. Complex contextual and individual factors drive these disparities.

The EU-funded PIONEERED research project analyses the origins of educational inequalities and strives to identify pioneering policies and practices that improve access to, uptake and completion of education.

PIONEERED aims to add to a comprehensive understanding of educational inequalities to successfully mitigate disadvantages in education.

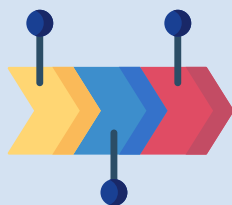
PIONEERED involves all parties in relevant educational settings. All project results will be made available on the open-access PIONEERED web platform.

OUR APPROACH



MULTILEVEL APPROACH

PIONEERED takes into account the range of educational inequalities at different levels – from the larger social/political context to the institutional level and the more individual level of everyday educational practice.



LIFE-COURSE PERSPECTIVE

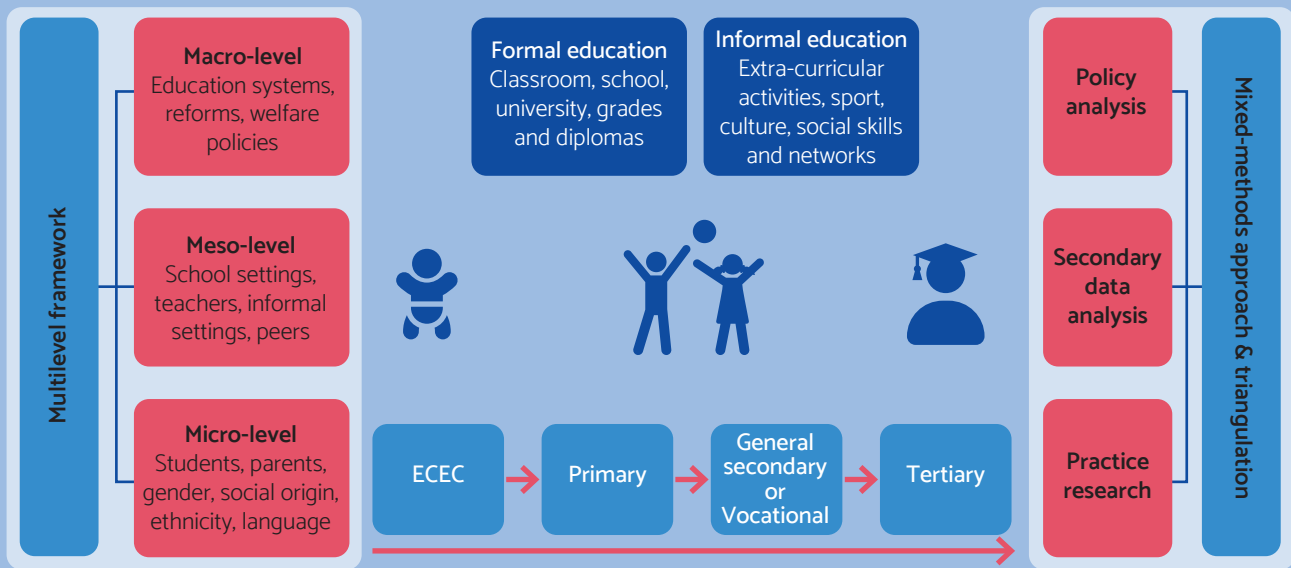
PIONEERED focuses on all educational stages, from early childhood education and care to higher education.



INTERSECTIONALITY

The PIONEERED research teams focus on the link between educational disparities and learners' individual characteristics as well as the intersections between these axes (e.g. working-class boys).

PIONEERED aims to add to a comprehensive understanding of educational inequalities to mitigate disadvantages in education successfully. In detail:



THE PIONEERED RESEARCH DESIGN

The PIONEERED research design relies on a unique combination of desk research, policy analysis, statistical data analysis and practice research, using a mixed-methods approach. In detail, the project rests on four key pillars:



Develop an innovative methodological framework by reviewing the current state of research



Examine data to identify intersectional inequalities throughout educational careers



Analyse how national (or regional) policies address inequalities and vulnerable groups



Conduct practical research in (in-) formal educational settings

CONTACT

Coordination

University of Luxembourg
 Professor Andreas Hadjar
 Phone: (+352) 46 66 44 9760
 Mail: Andreas.Hadjar@uni.lu

Management

Eurice – European Research and Project Office GmbH
 Nadine Drechoux
 Mail: n.drechoux@eurice.eu

www.pioneered-project.eu

[@PIONEERED_EU](https://twitter.com/PIONEERED_EU)



The PIONEERED project has received funding from the European Union's Horizon 2020 research and innovation programme under grant agreement No 101004392.